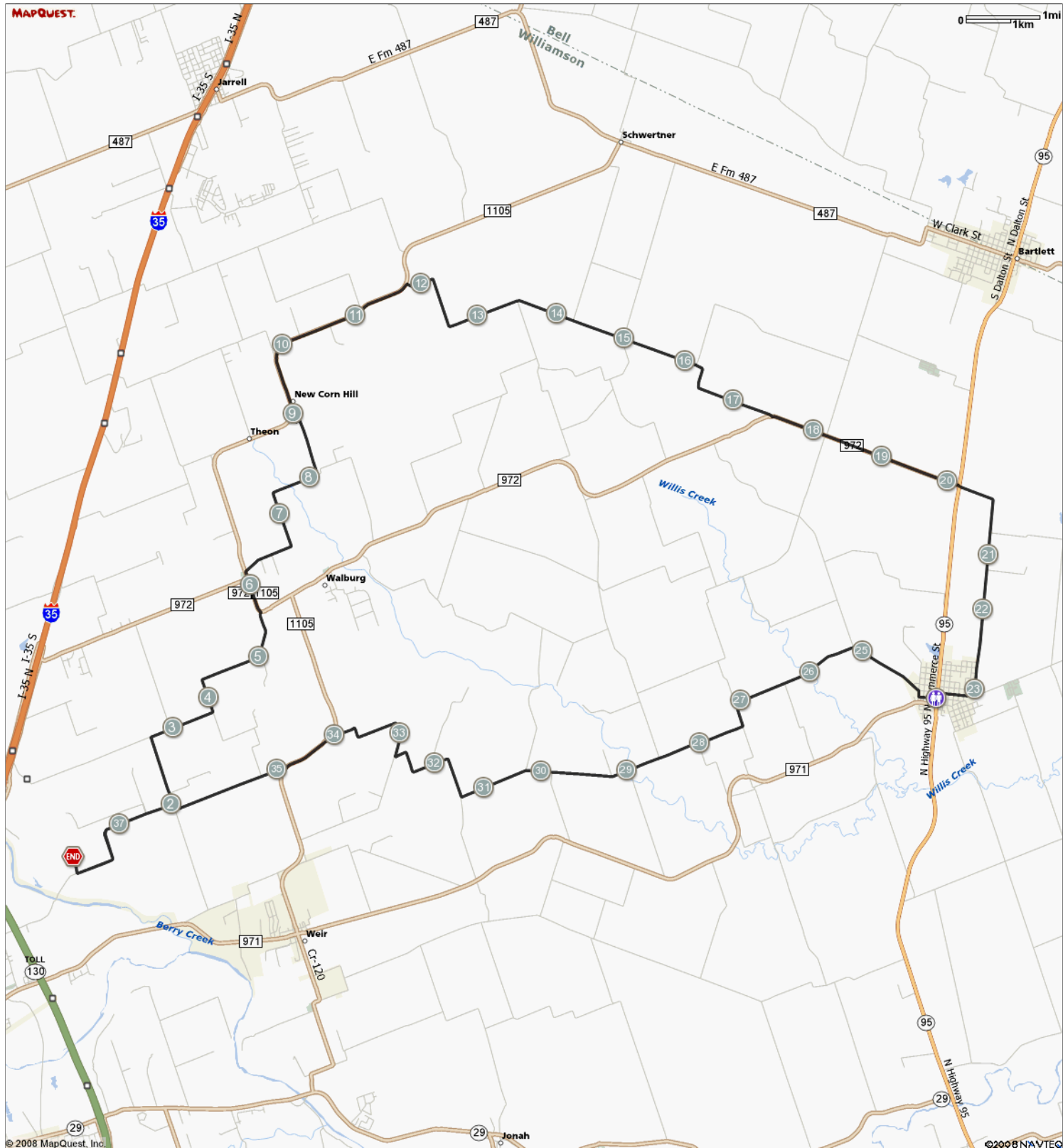


ROUTE DESCRIPTION:
No Description Provided



ROUTE DESCRIPTION:
 No Description Provided

Notes		
AT	FOR	NOTES
0.23 mi.		9,706 ft. Turn left at Highway 152
2.07 mi.		4,622 ft. Turn left at Highway 140
2.94 mi.		4,729 ft. Turn right at Highway 150
3.84 mi.		9,546 ft. Turn left to stay on Highway 150
5.65 mi.		2,229 ft. Turn left at 1105/972
6.07 mi.		778 ft. Turn right at 1105
6.22 mi.		10,622 ft. Turn right at Highway 317
8.23 mi.		4,056 ft. Turn left at Highway 316
9 mi.		650 ft. Turn right at County Road 316 Spur
9.12 mi.		14,440 ft. Turn right at 1105
11.85 mi.		30,931 ft. Turn right at Highway 302
17.71 mi.		14,008 ft. Turn left at 972
20.37 mi.		15,401 ft. Continue on Highway 355
23.28 mi.		2,167 ft. Turn right at E Davilla St
23.69 mi.		393 ft. Turn left at S Granger St
23.77 mi.		370 ft. Turn right at E Elm St
23.84 mi.		82 ft. Turn left at S Commerce St/ Farm- To-Market Road 971/ TX-95
23.85 mi.		285 ft. Bathroom

Notes		
AT	FOR	NOTES
23.91 mi.		209 ft. Turn right at 971/ W Mesquite
23.95 mi.		375 ft. Turn right at S Walton
24.02 mi.		1,521 ft. Turn left at W Elm St
24.31 mi.		5,433 ft. Turn left at W Davilla/ Widavilla
25.34 mi.		9,230 ft. Turn left at Highway 326
27.08 mi.		1,607 ft. Turn left at Highway 327
27.39 mi.		20,772 ft. Turn right to stay on Highway 327
31.32 mi.		2,650 ft. Turn right at Highway 156
31.82 mi.		4,814 ft. Turn left to stay on Highway 156
32.74 mi.		7,503 ft. Turn right at Highway 153
34.16 mi.		3,999 ft. Turn left at 1105
34.91 mi.		8,184 ft. Turn right at Highway 149
36.46 mi.		423 ft. Turn right at Highway 140
36.54 mi.		9,704 ft. Turn left at Highway 152
38.38 mi.		1,009 ft. Turn right
38.57 mi.		- Stop